

Mapping objects

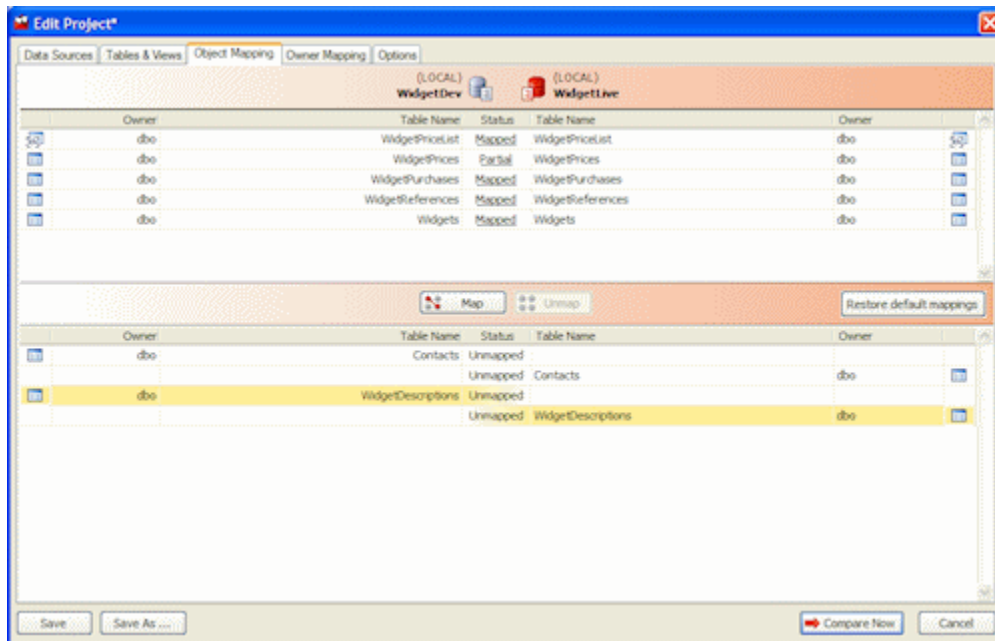
When you have selected your data sources, SQL Data Compare automatically maps tables and views with the same name and schema (owner).

However, if there are schema differences between the data sources, for example if two tables have different names, they may not be mapped automatically.

This page provides information on:

- [Mapping tables and views](#)
- [Mapping specific columns](#)


To compare tables and views that are not automatically mapped, click the **Object Mapping** tab of the Project Configuration dialog box:



The upper pane displays tables and views that are fully **Mapped** or have **Partial** mapping. The lower pane displays **Unmapped** tables and views.


Note that:


Views are listed only if the data source is a database and the project option **Include views** is selected.

- If an object has a Partial mapping, some of its columns are not be mapped, and cannot be compared. To set the column mappings for an object, click the **Status** box for the object you want to re-map.
- If the differences between objects are not significant, they are more likely to be automatically mapped if you select the options **Ignore case of object names**, **Ignore spaces in object names**, and **Ignore underscores in object names**
- If you are editing an existing project and the structure of the database has changed since you last ran the project, a warning symbol  is shown to indicate that those changes affect your project configuration.

Mapping tables and views


To map tables and views:

1. On the **Object Mapping** tab, select an *Unmapped* table or view that you want to map from the *source* database.
2. Select the *Unmapped* table or view that you want to map from the *target* database.
3. Click  **Map**. SQL Data Compare moves the tables or views to the upper pane.

Note that if the tables and views that you are mapping contain columns with incompatible data types, SQL Data Compare cannot compare those columns; the column mapping shows the incompatible data types as Uncomparable and a warning symbol  is shown in the **Tables & Views** tab.

For more information, see [Which data types can be compared?](#)

To unmap tables and views:

1. On the **Object mapping** tab, select a *Mapped* table or view, or a *Partial* mapping.
2. Click  **Unmap**.

SQL Data Compare moves the tables or views to the lower pane.

Mapping specific columns

If you want to compare columns in a table or view and the column names are different, you can map the columns as required.

To map columns:

1. On the **Object mapping** tab, click the **Status** box of a *Partial* mapping. A dialog box is displayed. For example:

CurrentPrices WidgetPriceList

Map the columns in a table or view if the column names are different.

Type	Column Name	Status	Column Name	Type
varchar(50)	Description	Mapped	Widget	varchar(50)
money	Price	Mapped	Price	money

Map Unmap

Type	Column Name	Status	Column Name	Type
int	WidgetID	Unmapped		
		Unmapped	RecordID	int

Close

2. Select an *Unmapped* column that you want to map from the *source* database.
3. Select an *Unmapped* column that you want to map from the *target* database.
4. Click **Map**.
SQL Data Compare moves the columns to the upper pane of the dialog box.
5. Click **Close**.



If a column is shown as *Uncomparable*, SQL Data Compare cannot compare the data that is stored in the column.

For more information, see [Which data types can be compared?](#)

To unmap columns:

1. On the **Object mapping** tab, click the **Status** box of a *Mapped* table or view, or a *Partial* mapping.
A dialog box is displayed for you to specify the column mappings, as shown above.
2. Select a *Mapped* column.
3. Click **Unmap**.
SQL Data Compare moves the columns to the lower pane of the dialog box.
4. Click **Close**.