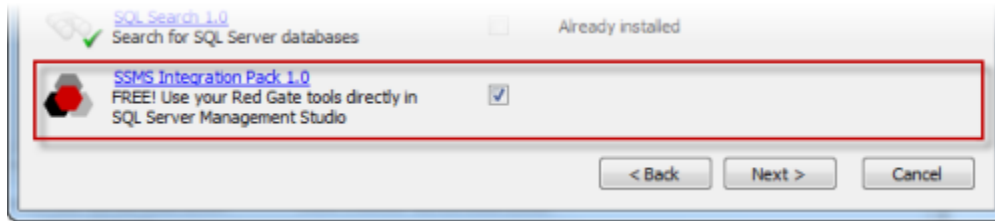


# Using the add-in

SQL Data Compare includes a free add-in for SQL Server Management Studio that enables you to compare and deploy (deploy) data from within SQL Server Management Studio.

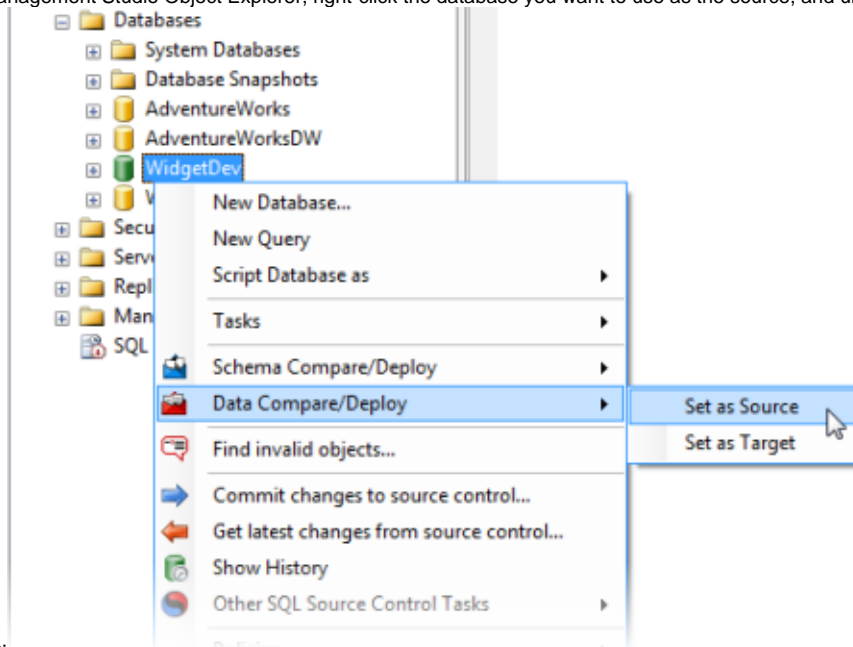
The add-in is bundled with the SQL Data Compare installer, which you can [download here](#). When you run the installer, ensure that the **SSMS Integration Pack** check box is selected:



## Comparing data

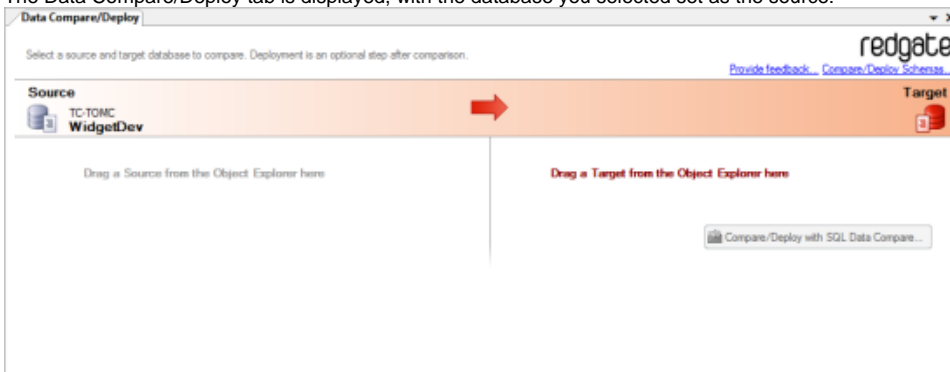
To compare two databases from SQL Server Management Studio:

1. In the SQL Server Management Studio Object Explorer, right-click the database you want to use as the source, and under **Data Compare/Deploy**



, click **Set as Source**:

The Data Compare/Deploy tab is displayed, with the database you selected set as the source:



2. Drag the database you want to use as the target from the Object Explorer to the Target pane.
3. Click **Compare/Deploy with SQL Data Compare**.  
SQL Data Compare launches a creates a new project using the databases you selected.
4. On the SQL Data Compare Project Configuration dialog box, click **Compare Now**.