

Worked example - deploying data in two databases

This worked example demonstrates a basic comparison and deployment of two SQL Server databases.

In the example, the Magic Widget Company has a SQL Server database running on a live web server. This database contains a number of tables, views, stored procedures, and other database objects. The Magic Widget Company's development team has been working on an upgrade to their website. As part of this upgrade, they've made a number of changes to the database, which need to be transferred to the production database.

You can follow the example on your own system. You'll need access to a SQL Server to do this.

This example has four steps:

1. [Set up the databases](#)
Create the example databases on your SQL Server.
2. [Set up the comparison](#)
Specify the data sources, tables, and views you want to compare.
3. [Select data to deploy](#)
Review the results and select the rows you want to deploy.
4. [Deploy the databases](#)
Create and run a deployment script.

1. Set up the databases

The worked example uses the following sample databases:

- WidgetDev is the development database
- WidgetTest is the testing database
- WidgetLive is the production database

To create the databases on your SQL Server:

1. [Click here to download](#) the SQL creation script for the databases.
2. Copy the script, paste it in your SQL editor application, and run it.



If databases named WidgetDev, WidgetTest or WidgetLive already exist on your SQL Server, the script will overwrite them.

The databases are created and populated with data.

2. Set up the comparison

In this example, there are three steps to setting up the comparison:


1. Specify data sources
2. Select tables and views
3. Set object mappings

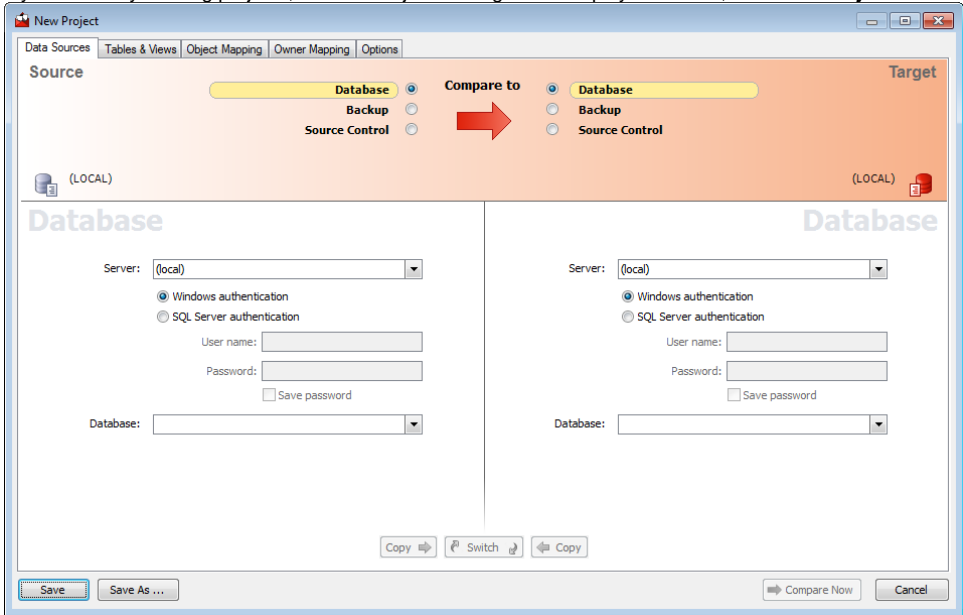


It's not always necessary to set object mappings. However, in this example there are some schema differences between the source and target. For more information, see [Mapping objects](#)

Specify data sources

1. Start SQL Data Compare if it is not already running.
The Project Configuration dialog box is displayed showing your most recent project:
You can edit the current project, or create a new project.

If you want to create a new project, click **Cancel** to close the dialog box, and on the toolbar click  (New Project). If you have any existing projects, and the Projects dialog box is displayed instead, click **New Project**.



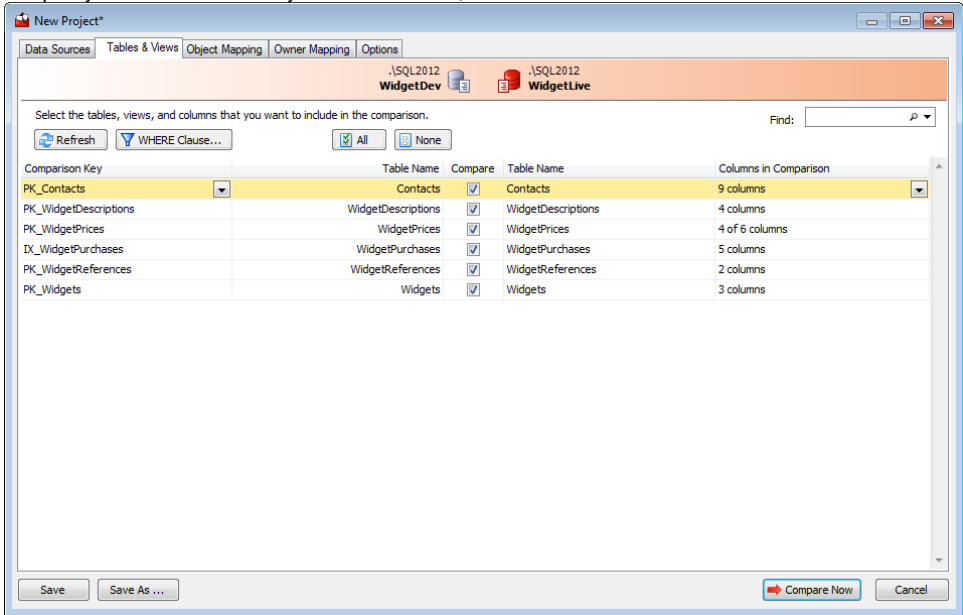
2. In the shaded upper pane, ensure the Source and Target are set to **Database**. In this example, we will compare databases. You can also compare backups and scripts folders.
3. For each data source, in the **Server** box, type or select the name of the server on which you set up the databases.
4. For the source, in the **Database** box, type or select *WidgetDev*.

For the target, type or select *WidgetLive*.

If the databases are not displayed in the **Database** lists, right-click in each **Database** box and click **Refresh**, or scroll to the top of the list and click **Refresh**.

Select tables and views


1. To specify the tables and views you want to include, click the **Tables & Views** tab:



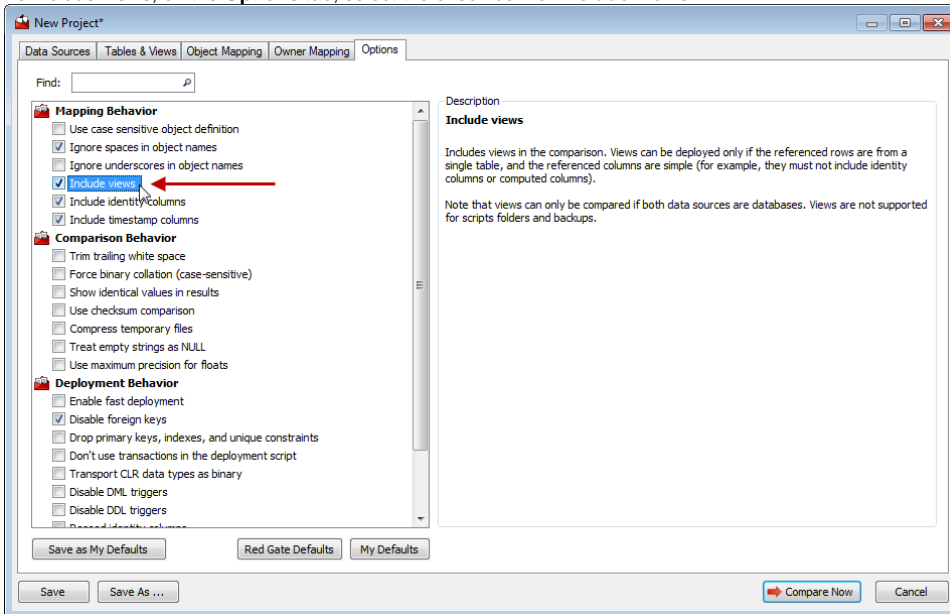
Comparison Key	Table Name	Compare	Table Name	Columns in Comparison
PK_Contacts	Contacts	<input checked="" type="checkbox"/>	Contacts	9 columns
PK_WidgetDescriptions	WidgetDescriptions	<input checked="" type="checkbox"/>	WidgetDescriptions	4 columns
PK_WidgetPrices	WidgetPrices	<input checked="" type="checkbox"/>	WidgetPrices	4 of 6 columns
IX_WidgetPurchases	WidgetPurchases	<input checked="" type="checkbox"/>	WidgetPurchases	5 columns
PK_WidgetReferences	WidgetReferences	<input checked="" type="checkbox"/>	WidgetReferences	2 columns
PK_Widgets	Widgets	<input checked="" type="checkbox"/>	Widgets	3 columns

The **Tables & Views** tab enables you to specify:

- the tables and views you want to compare
- which specific columns you want to compare
- the **comparison key** SQL Data Compare uses to match rows in the two databases

 By default, SQL Data Compare does not compare views.

2. To include views, on the **Options** tab, select the check box for **Include views**:



The **Options** tab allows you to modify the behavior of SQL Data Compare during comparison and deployment.

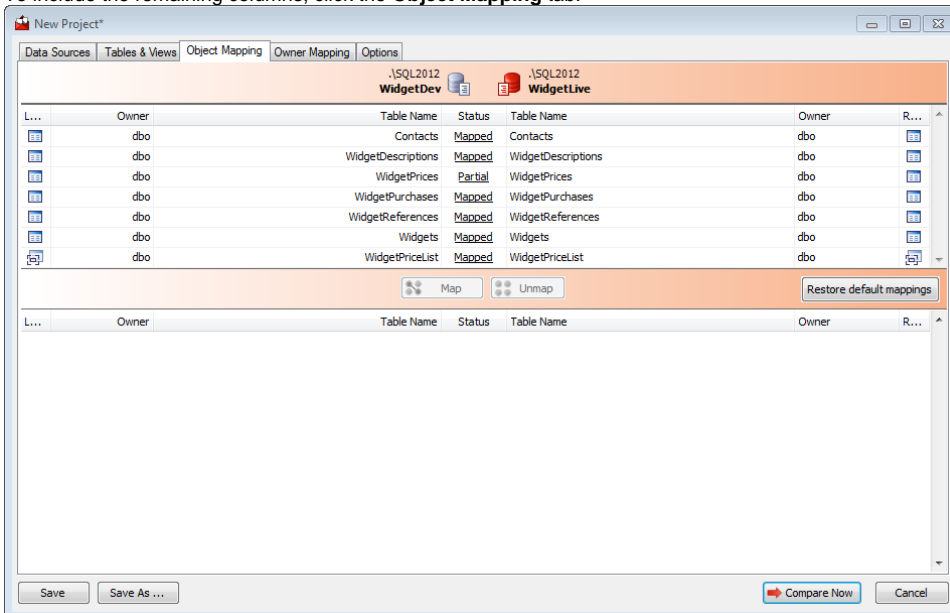
3. Click the **Tables & Views** tab again.
The WidgetPriceList view is now included in the comparison.



For the WidgetPrices table, only 4 out of the 6 columns will be compared, as two of the column names do not match. To include the remaining columns, you must map the objects

Set object mappings

1. To include the remaining columns, click the **Object Mapping** tab:



The **Object Mapping** tab displays a list of table and view mappings.

Mappings define which tables and views can be compared. For example, the table WidgetDescriptions in WidgetDev is mapped to WidgetDescriptions in WidgetLive. However, it can be mapped to any table with a sufficiently similar structure.

You can use the object mappings to compare tables with different or similar names.

The table WidgetPrices shows a **Partial** mapping, as not all of its columns could be automatically mapped.

- To view and edit the column mappings, in the **Status** column, click **Partial** for the WidgetPrices table:

.\SQL2012 WidgetDev		.\SQL2012 WidgetLive	
Table Name	Status	Table Name	
Contacts	Mapped	Contacts	
WidgetDescriptions	Mapped	WidgetDescriptions	
WidgetPrices	Partial	WidgetPrices	
WidgetPurchases	Mapped	WidgetPurchases	
WidgetReferences	Mapped	WidgetReferences	
Widgets	Mapped	Widgets	
WidgetPriceList	Mapped	WidgetPriceList	

A dialog box is displayed for you to edit the column mappings:

WidgetPrices
WidgetPrices

Map the columns in a table or view if the column names are different.

Type	Column Name	Status	Column Name	Type
int identit...	RecordID	Mapped	RecordID	int identit...
int	WidgetID	Mapped	WidgetID	int
money	Price	Mapped	Price	money

Map Unmap

Type	Column Name	Status	Column Name	Type
datetime	ValidFrom	Unmapped		
datetime	ValidTo	Unmapped		
		Unmapped	DateValidFrom	datetime
		Unmapped	DateValidTo	datetime

Close

- In the lower pane of the dialog box, click *DateValidFrom* and then *ValidFrom*, and then click **Map** to map the columns. The columns move to the upper pane of the dialog box.
- Map the *DateValidTo* and *ValidTo* columns in the same way, and click **Close**. The status for the WidgetPrices table changes to *Mapped*.
- Click **Compare Now**.

SQL Data Compare displays a message dialog box that shows the progress of the comparison. If you select the **Close dialog box on completion** check box, SQL Data Compare closes this message dialog box automatically the next time that you run a comparison on a project. For this example, leave the setting as it is, and click **OK** to close the message box.

3. Select data to deploy

The comparison results are displayed in the main window.

SQL Data Compare - New Project*

File Actions Tools Help

Edit Project... Refresh Deployment Wizard... Find: Group by: Type of difference

1 of 1 warning: [dbo].[WidgetPrices]: Columns were mapped automatically

.\SQL2012
WidgetDev
.\SQL2012
WidgetLive
11030 of 11030 rows selected for deployment

Type	All Different	Table Name	Source Only	Different	Target Only	Table Name	Identical
6 tables or views with differences in their rows					11030 of 11030 (108558)		Actions
1 table or view with identical rows only							

A yellow warning bar is displayed indicating that SQL Data Compare has automatically mapped columns in the WidgetPrices table:

1 of 1 warning: [dbo].[WidgetPrices]: Columns were mapped automatically



In this example we mapped the columns manually, so we can ignore this warning.

In this example, the comparison results are grouped by:



tables or views with differences in their rows



tables or views with identical rows only

To display the comparison results in a single list, in the **Group by** box, select *No groups*.

To display the comparison results in groups, select *Type of difference*.

To view the comparison results for each object group, click or click the grouping bar:

Type	All Different	Table Name	Source Only	Different	Target Only	Table Name	Identical
6 tables or views with differences in their rows 11030 of 11030 (108558) Actions							
	<input checked="" type="checkbox"/> 7	Contacts	0	<input checked="" type="checkbox"/> 7	0	Contacts	93
	<input checked="" type="checkbox"/> 3	WidgetDescriptions	0	<input checked="" type="checkbox"/> 2	<input checked="" type="checkbox"/> 1	WidgetDescriptions	0
	<input checked="" type="checkbox"/> 4	WidgetPrices	<input checked="" type="checkbox"/> 3	<input checked="" type="checkbox"/> 1	0	WidgetPrices	2
	<input checked="" type="checkbox"/> 11010	WidgetPurchases	0	<input checked="" type="checkbox"/> 854	<input checked="" type="checkbox"/> 10156	WidgetPurchases	97425
	<input checked="" type="checkbox"/> 2	Widgets	<input checked="" type="checkbox"/> 1	0	<input checked="" type="checkbox"/> 1	Widgets	6
	<input checked="" type="checkbox"/> 4	WidgetPriceList	<input checked="" type="checkbox"/> 3	0	<input checked="" type="checkbox"/> 1	WidgetPriceList	2
1 table or view with identical rows only							

The upper (Results) pane also shows how many rows of each type exist for each table or view. For example, the table WidgetPrices contains:

- three rows that exist in WidgetDev but not in WidgetLive
- one row that exists in both databases but has different values
- no rows that exist in WidgetLive but not in WidgetDev.

The Identical column shows that there are two rows that are identical.

Finding objects

To locate objects, type the search text in the **Find** box. To select a recent search, click the **Find** arrow button ▼

As you type, objects are grouped in the upper pane by whether they match or do not match what you type:

Type	All Different	Table Name	Source Only	Different	Target Only	Table Name
6 objects match 'widget' 11023 of 11023 (108460)						
	<input checked="" type="checkbox"/> 3	WidgetDescriptions	0	<input checked="" type="checkbox"/> 2	<input checked="" type="checkbox"/> 1	WidgetDescriptions
	<input checked="" type="checkbox"/> 4	WidgetPrices	<input checked="" type="checkbox"/> 3	<input checked="" type="checkbox"/> 1	0	WidgetPrices
	<input checked="" type="checkbox"/> 11010	WidgetPurchases	0	<input checked="" type="checkbox"/> 854	<input checked="" type="checkbox"/> 10156	WidgetPurchases
	<input checked="" type="checkbox"/> 2	Widgets	<input checked="" type="checkbox"/> 1	0	<input checked="" type="checkbox"/> 1	Widgets
	<input checked="" type="checkbox"/> 4	WidgetPriceList	<input checked="" type="checkbox"/> 3	0	<input checked="" type="checkbox"/> 1	WidgetPriceList
	0	WidgetReferences	0	0	0	WidgetReferences
1 object does not match 'widget' 7 of 7 (100)						

SQL Data Compare searches object names and owners (schemas).

Note that the search is not case-sensitive.


To clear the **Find** box click the ✕ button.

Viewing row differences

To view detailed information about the data in a table or view, click on it in the upper pane. The lower (Row Differences) pane is displayed.

Click the table *WidgetDescriptions* to see the row differences:

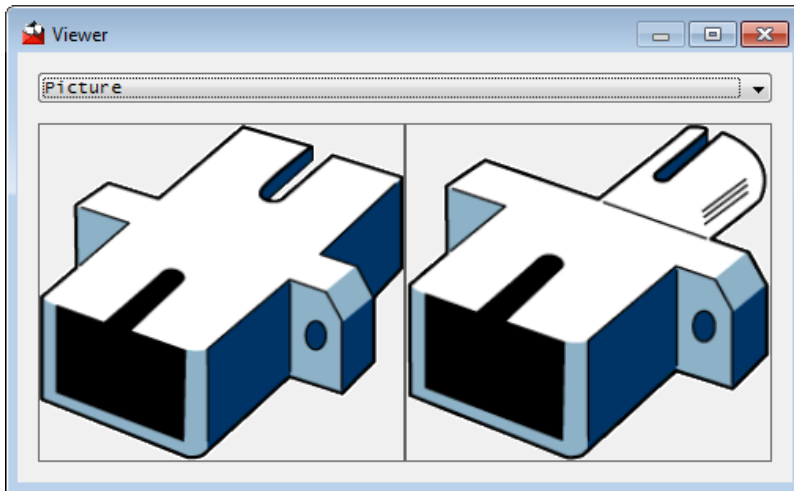
Include	WidgetID	ShortDescription	Description	Picture
<input checked="" type="checkbox"/>	1	A widget	<description xmlns="htt...	Binary Data
<input checked="" type="checkbox"/>	2	A medium-sized widget	<description xmlns="htt...	Binary Data
<input checked="" type="checkbox"/>	3	A small widget	<description xmlns="htt...	Binary Data

In this example **WidgetID** is the [comparison key](#) , used by SQL Data Compare to match rows in the two databases.

For the row where WidgetId is 2, the values for **Short Description** and **Description** are the same in both databases, so the data is displayed in gray text.

The **Picture** values are different so they are displayed with the darker shaded background.

To view a specific value in a row double-click it, or right-click and select **Show Viewer**. **Binary Data** values are displayed as links. Click the **Binary Data** link for the row where WidgetID is 2:



For tables or views that contain a large number of columns, you may find it useful to display the column values vertically so that you can see records more easily. To do this, click **Show**, then **Pivot View**:

Columns	1	2	3
WidgetID	1	2	3
ShortDescription	A widget	A medium-sized widget	A small widget
Description	<description xmlns="htt...	<description xmlns="htt...	<description xmlns="htt...
Picture	Binary Data	Binary Data	Binary Data

To display the column values horizontally again, click **Show**, then **Pivot View**.

You can move through each difference in turn using the  and  buttons. To move through the differences for the current column, click  or .

Selecting rows to deploy

Use the check boxes in each pane to select data for deployment. You can select individual tables or views to deploy, and for each table or view you can select the rows that you want to deploy. By default, all rows that differ are selected when you run a comparison.

For this example, select all the tables and their rows. Make sure that the check boxes are cleared for the WidgetPriceList view. You do this by clearing the **All Different** check box for WidgetPriceList:

Type	All Different	Table Name	Source Only	Different	Target Only	Table Name	Identical			
6 tables or views with differences in their rows11026 of 11030 (108558)Actions										
	<input checked="" type="checkbox"/>	7	Contacts	0	<input checked="" type="checkbox"/>	7	0	Contacts	93	
	<input checked="" type="checkbox"/>	3	WidgetDescriptions	0	<input checked="" type="checkbox"/>	2	<input checked="" type="checkbox"/>	1	WidgetDescriptions	0
	<input checked="" type="checkbox"/>	4	WidgetPrices	<input checked="" type="checkbox"/>	3	<input checked="" type="checkbox"/>	1	0	WidgetPrices	2
	<input checked="" type="checkbox"/>	11010	WidgetPurchases	0	<input checked="" type="checkbox"/>	854	<input checked="" type="checkbox"/>	10156	WidgetPurchases	97425
	<input checked="" type="checkbox"/>	2	Widgets	<input checked="" type="checkbox"/>	1	0	<input checked="" type="checkbox"/>	1	Widgets	6
	<input checked="" type="checkbox"/>	4	WidgetPriceList	<input checked="" type="checkbox"/>	3	0	<input checked="" type="checkbox"/>	1	WidgetPriceList	2
1 table or view with identical rows only										

The number of rows selected for deployment is shown in the Direction Bar.

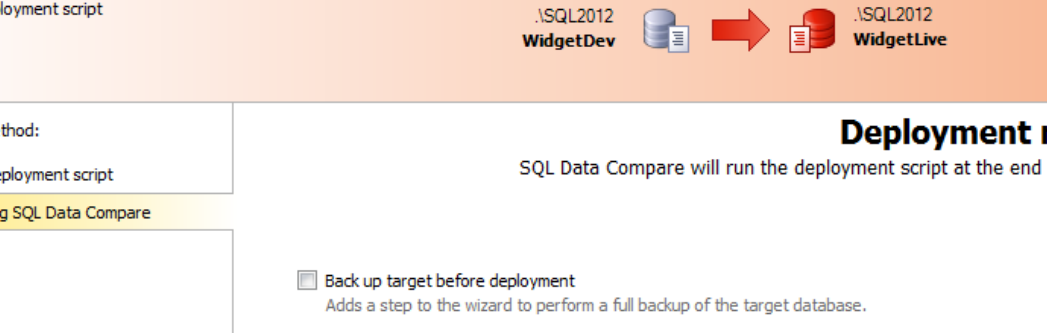
To deploy, click **Deployment Wizard**.

4. Deploy the databases

On the first page of the deployment Wizard you can choose to create and save a deployment script, or perform the deployment using SQL Data Compare.

Choose deployment method

In this example, we will deploy using SQL Data Compare.



Deployment

1 - Choose deployment method
2 - Review deployment script

Deployment will change this database

.SQL2012 WidgetDev → .SQL2012 WidgetLive

Deployment method:

☐ Create a deployment script

☒ Deploy using SQL Data Compare

Deployment method

SQL Data Compare will run the deployment script at the end of this wizard

☐ Back up target before deployment
Adds a step to the wizard to perform a full backup of the target database.

☒ Recompare after deployment

☒ Save a copy of the deployment script:

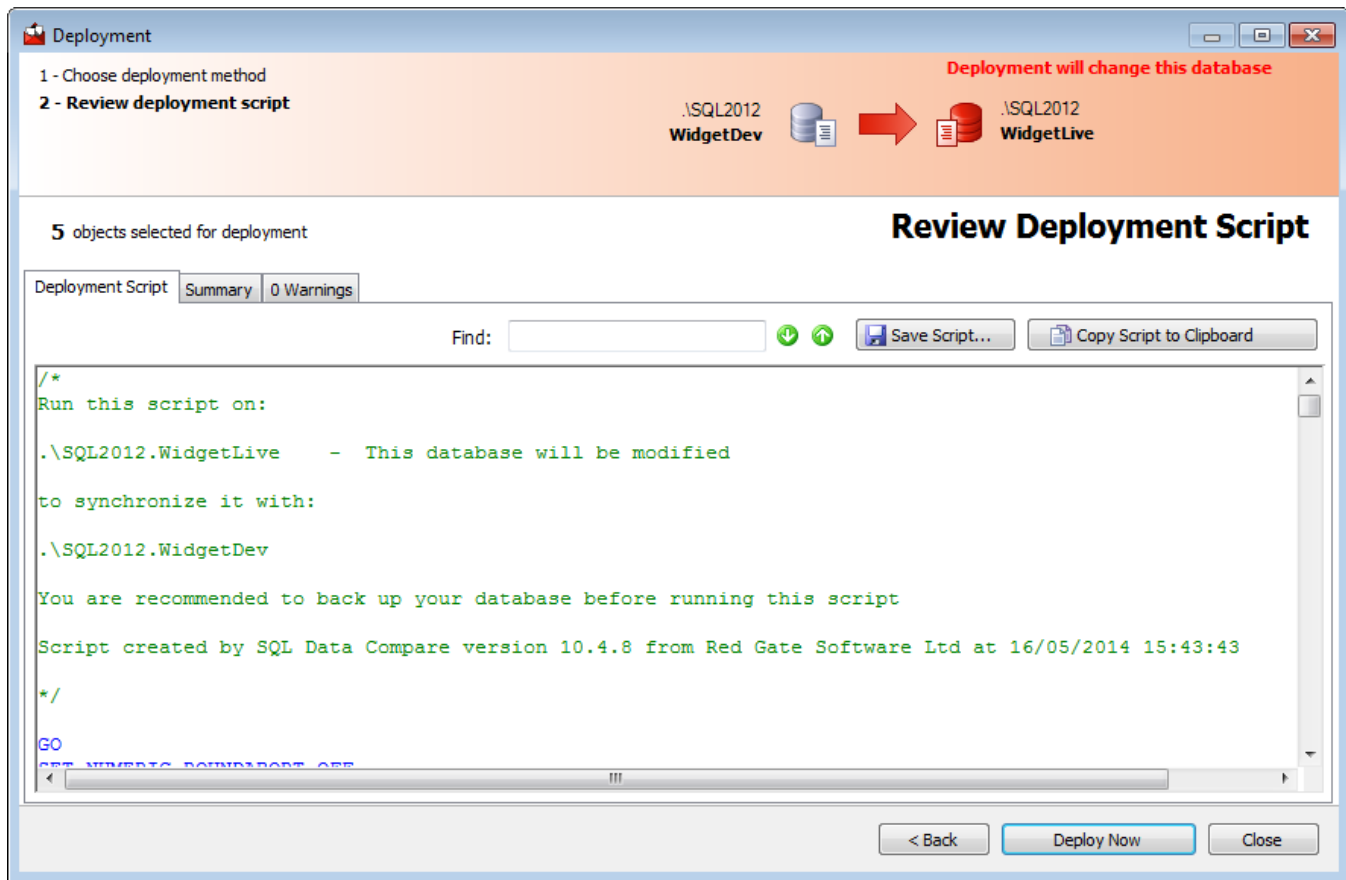
Name: .SQL2012.WidgetDev-.SQL2012.WidgetLive-.sql

Location: C:\Users\tom.crossman\Documents\SQL Data Compare\SQL Scripts

< Back Next > Cancel

1. Make sure **Deploy using SQL Data Compare** is selected.
2. Clear the **Back up target before deployment** check box if it's selected.
In this example, we won't back up before deployment.
For more information, see [Backing up before deployment](#)
3. To generate the deployment script, click **Next**.
The **Review** page is displayed.

Review the deployment script



There are three tabs on the **Review** page:

- **Deployment script** shows the script to deploy the data sources. You can search the script, save it, or copy it to the clipboard.
- **Summary** shows a synopsis of the actions in the deployment script. You can view the summary grouped by the objects affected, by the type of modification, or by the order in which the script modifies the target.
- **Warnings** shows a list of any warnings about unexpected behavior that may occur when you deploy the databases.

For more information, see [Deployment warnings](#).

Perform the deployment

When you have reviewed the script, deploy the databases:

1. Click **Deploy Now** to perform the deployment.
2. A confirmation dialog box is displayed. Click **Deploy Now** to continue.
3. SQL Data Compare displays a message dialog box that shows the progress of the deployment. When the deployment is complete, click **OK** to close the message box.

SQL Data Compare then re-compares the databases. The results are shown in the main window. In this example, all tables and their rows are shown to be identical, confirming that the deployment has been a success.

Note that the WidgetPriceList views are also now identical, because the tables that they reference have been deployed:

SQL Data Compare - New Project*

File

Actions

Tools

Help

Edit Project...

Refresh

Deployment Wizard...

Find:

Group by:

Type of difference

.\SQL2012

WidgetDev

.\SQL2012

WidgetLive

All rows identical

Type	All Different	Table Name	Source Only	Different	Target Only	Table Name	Identical
7 tables or views with identical rows only							
	0	Contacts	0	0	0	Contacts	100
	0	WidgetDescriptions	0	0	0	WidgetDescriptions	2
	0	WidgetPrices	0	0	0	WidgetPrices	6
	0	WidgetPurchases	0	0	0	WidgetPurchases	98279
	0	WidgetReferences	0	0	0	WidgetReferences	2
	0	Widgets	0	0	0	Widgets	7
	0	WidgetPriceList	0	0	0	WidgetPriceList	5