

Maintenance Plan Conversion Wizard

SQL Backup Pro provides a wizard to guide you through the process of converting maintenance plans created with SQL Server Management Studio or SQL Server Enterprise Manager so that they use SQL Backup Pro features such as compression and encryption for backup tasks.

The wizard converts maintenance plans generated by SQL Server Management Studio or SQL Server Enterprise Manager, including legacy maintenance plans upgraded from SQL Server 2000 to SQL Server 2005 or SQL Server 2008.



The Maintenance Plan Conversion Wizard does not support features introduced by SQL Backup 6 or later, including compression level 4, optimization and reminders.

To launch the Maintenance Plan Conversion Wizard:

- From the SQL Backup Pro graphical user interface, select **Tools > Utilities > Maintenance Plan Conversion Wizard**.
- Run *SQBMaintPlanConv.exe*. This is located in the SQL Backup Pro installation folder (by default, %ProgramFiles%\Red Gate\SQL Backup 8 on 32-bit machines and %ProgramFiles(x86)%\Red Gate\SQL Backup 8 on 64-bit machines). You can run the program on any server on which you have installed the SQL Backup Pro server components.

The Maintenance Plan Conversion Wizard comprises the following steps:

[Step 1: select the SQL Server](#)

[Step 2: select the maintenance plans](#)

[Step 3: configure settings for features provided by SQL Backup Pro](#)

[Step 4: review and apply the changes](#)

[Step 5: verify the changes](#)

Step 1: select the SQL Server

This page is for selecting the SQL Server instance on which the maintenance plans are located.

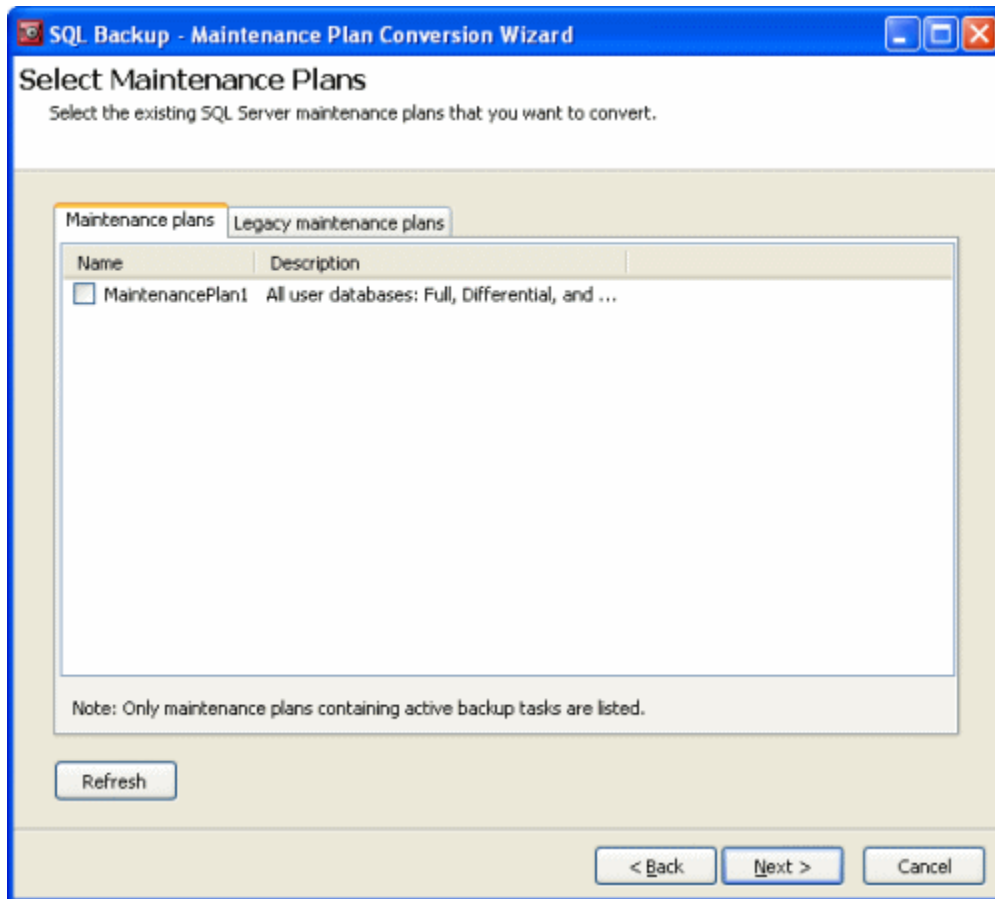
The screenshot shows a Windows-style dialog box titled "SQL Backup - Maintenance Plan Conversion Wizard". The main heading is "Select SQL Server" with the instruction "Select the SQL Server to connect to." below it. There is a text box labeled "SQL Server" with a browse button (three dots) to its right. Under the heading "Connect using", there are two radio buttons: "Windows authentication" (which is selected) and "SQL Server authentication". Below these are two text boxes labeled "Login name" and "Password". At the bottom of the dialog are three buttons: "< Back", "Next >", and "Cancel".

In the **SQL Server** box, type the name of the SQL Server instance, or click to browse to a SQL Server instance on the local network.

Select the authentication method to connect to the SQL Server instance. For **SQL Server authentication**, enter the **Login name** and **Password**.

Step 2: select the maintenance plans

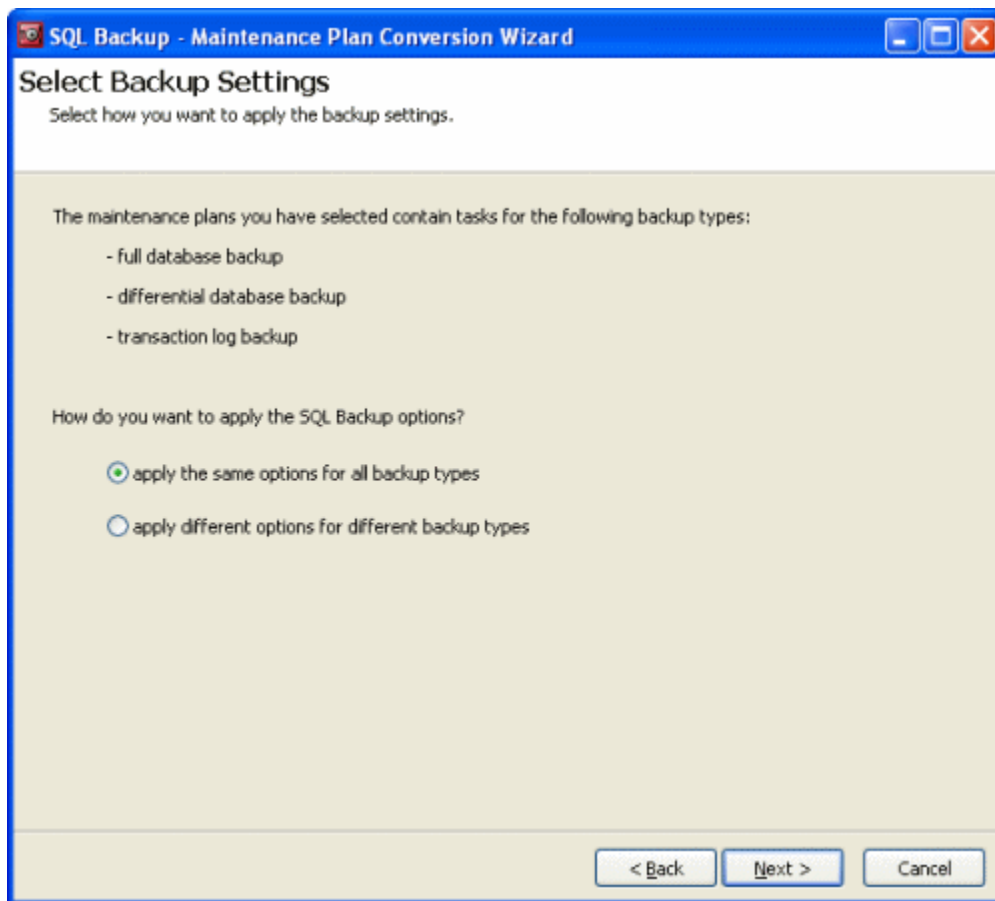
This page is for selecting the maintenance plans to convert.



A maintenance plan is displayed in the list if:

- the associated SQL Server agent jobs are enabled
- there is at least one valid native backup step
 - A step is valid if it contains one or more referenced databases.
 - For SQL Server 2005 and SQL Server 2008, the backup step must be enabled. If a maintenance plan is not displayed in the list, this may be because the maintenance plan has already been converted, or because it does not contain any steps to convert.

If you select a maintenance plan that has backup tasks for more than one backup type, for example full, differential, and transaction log, when you click **Next** the wizard displays a page asking you whether you want to use the same settings for all backup types or use different settings for each backup type.



If you select **apply different options for different backup types**, the options pages in the following step are repeated for each backup type.

Step 3: configure settings for features provided by SQL Backup Pro

This page is for specifying the locations and file names for backups, and for managing existing backup files.

SQL Backup - Maintenance Plan Conversion Wizard

Select SQL Backup File Options

Enter the backup folder and naming convention for your SQL Backup backup files.

Backup folder: C:\Program Files\Microsoft SQL Server\MSSQL.1\MSSQL\Backup\

File name: <TYPE>_<INSTANCE>_<DATABASE>_<DATETIME yyyyymmdd_hhnnss> Reset

Available tags: <TYPE> <SERVER> <INSTANCE> <DATABASE> <DATETIME format>

☐ Overwrite existing files

☒ Delete backup files older than 30 days

☐ Verify files after completion of backup

< Back Next > Cancel

- **Backup folder** is the name of the folder to back up to. You can optionally use the <tags> available in SQL Backup Pro (see [File location tags](#) for more information).
- **File name** is the name of the file to back up to; this requires use of the <tags>. To reset the file name format to its default value, click **Reset**.
- **Overwrite existing files** overwrites backup files of the same name that already exist.
- **Delete backup files older than** deletes any backups of the same type, on the same server and database that are older than the specified time frame.
- **Verify files after completion of backup** performs some additional checks to confirm that the backup has not been damaged or corrupted.

The next page is for specifying compression and encryption settings.

SQL Backup - Maintenance Plan Conversion Wizard

Select SQL Backup Processing Options
Select the compression, encryption and email options.

Compression options

☒ Compress backup

Standard 1 2 3 Maximum

High speed

Encryption options

☐ Encrypt backup

☒ 128-bit key ☐ 256-bit key

Password

Confirm password

Email completion log

Send to

☐ Send email only on error

< Back Next > Cancel

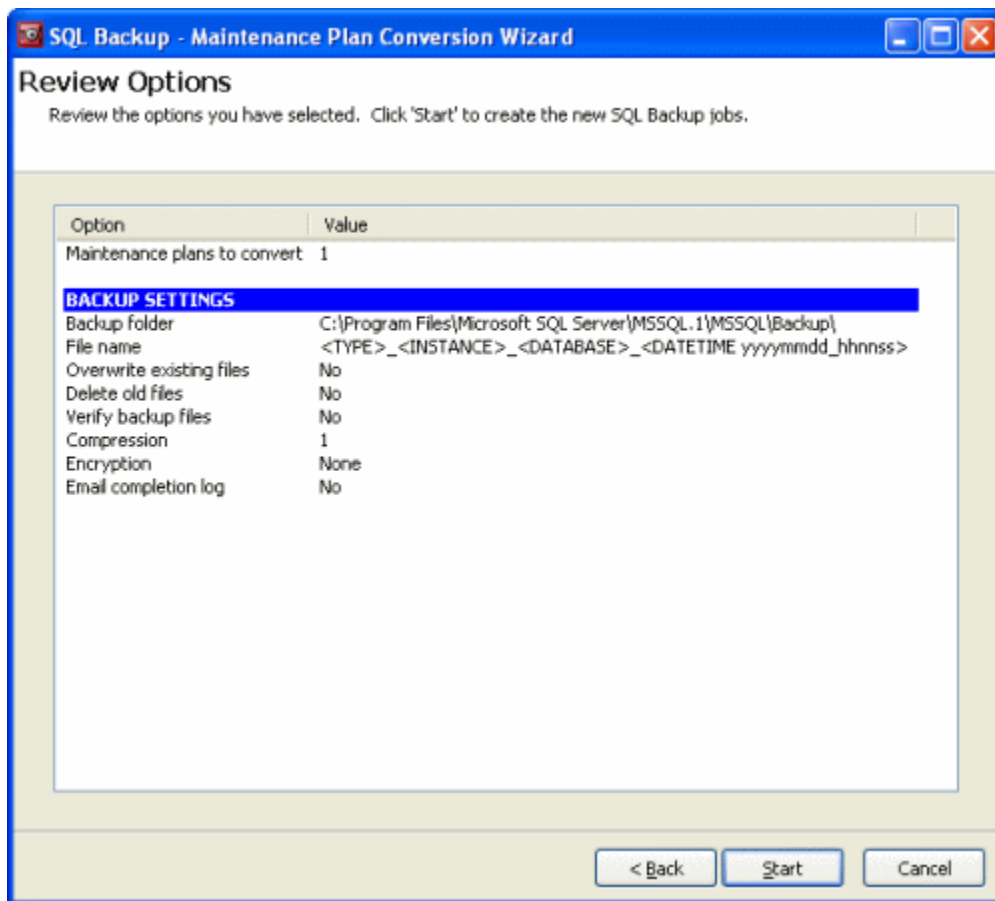
Compress backup uses compression to reduce the size of the backup file. Higher compression levels generally produce smaller files, but may take slightly longer to produce. For more information, see [Compression levels](#).

Encrypt backup uses 128-bit or 256-bit encryption to secure the backup file against unauthorized users. The encryption levels available to you depend on the edition of SQL Backup you are using. Type a password for the backup in **Password**, and again in **Confirm password**.

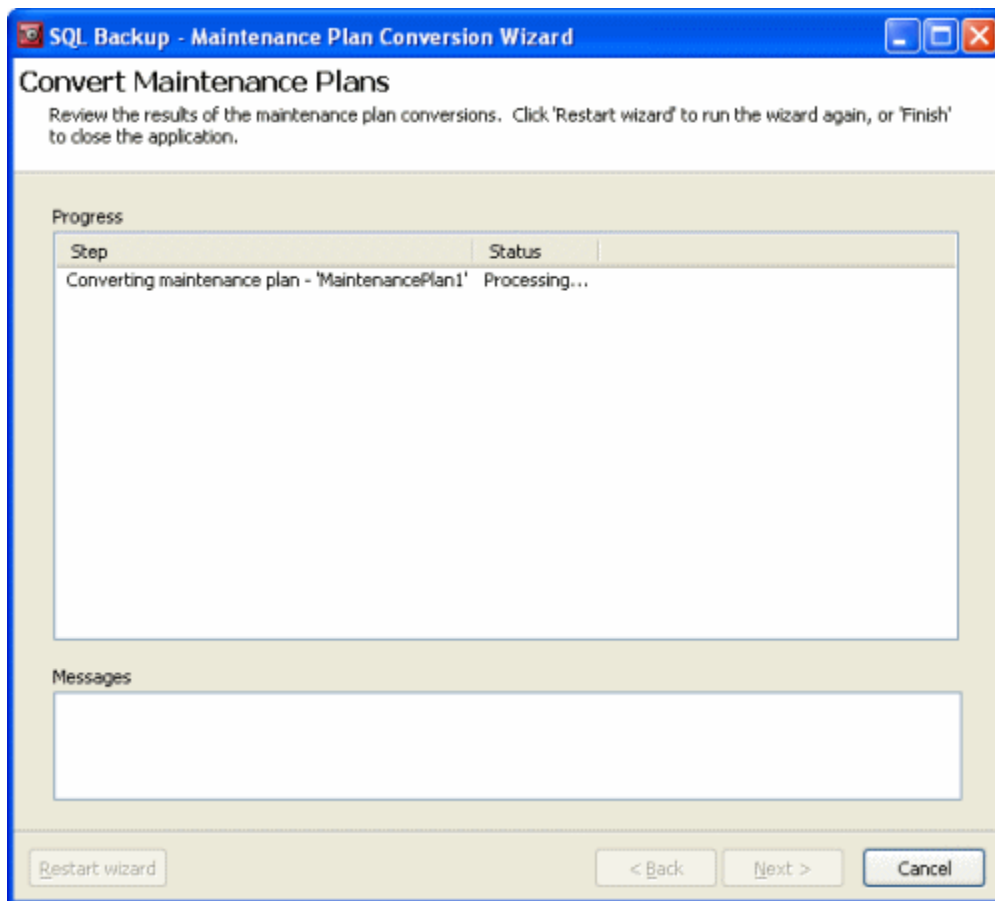
Send to sends an email when the backup is completed (on success or failure). If you select the **Send email only on error** check box, emails are sent only on failure. You must configure the email settings on the **Options** dialog box in the SQL Backup Pro graphical user interface. For more information about configuring email settings, see [Email settings](#).

Step 4: review and apply the changes

This page provides a summary for reviewing your settings.



When you click **Start**, the wizard displays the progress of the conversion, including any issues that occur.



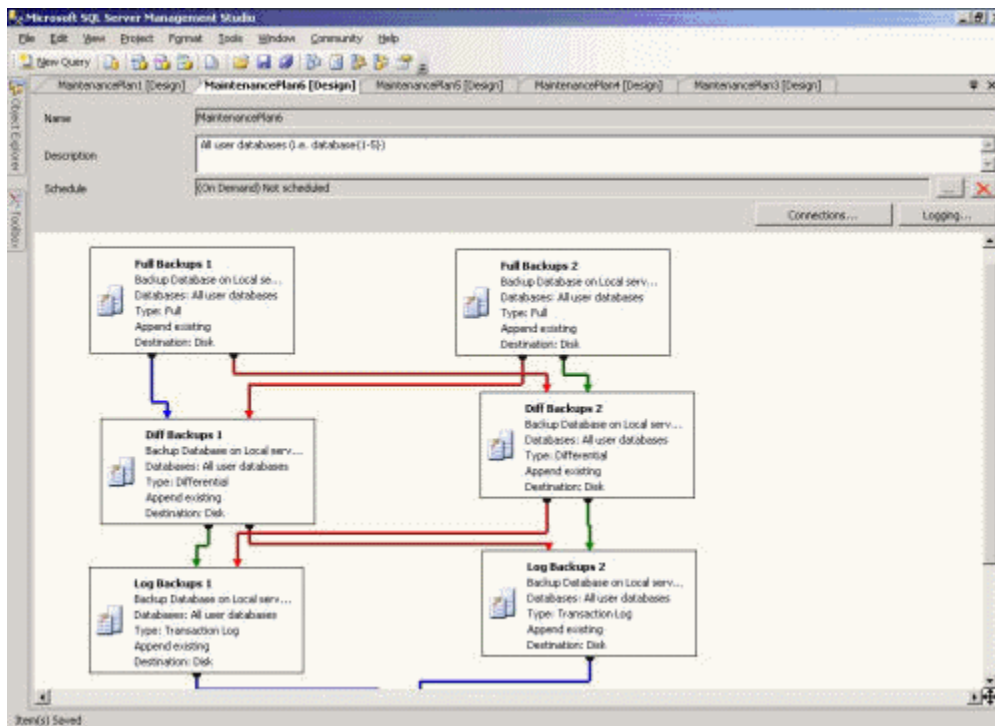
Step 5: verify the changes

When the maintenance plans have been converted, you are recommended to check them in SQL Server Management Studio or SQL Server Enterprise Manager.

For SQL Server 2000 and legacy maintenance plans, a new maintenance plan and SQL Server Agent job is created with the settings you specified in the Maintenance Plan Conversion Wizard; the SQL Server Agent job in the old maintenance plan is disabled.

For SQL Server 2005 and SQL Server 2008, the existing maintenance plan is modified. Any backup tasks with native SQL Server backups are disabled and replaced with steps that use SQL Backup Pro; any links or relationships between job steps should remain intact.

An example of a maintenance plan before conversion:



An example of a maintenance plan after conversion and reorganization:

