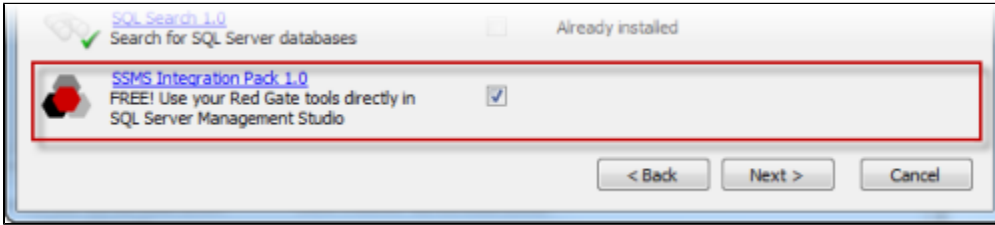


# Getting started with the add-in

SQL Compare includes a free add-in for SQL Server Management Studio that lets you compare and deploy databases (including versions from source control) from Management Studio.

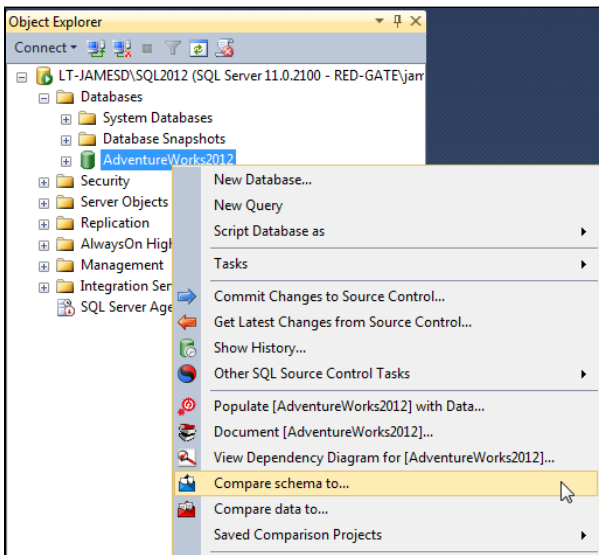
The add-in is bundled with the SQL Compare installer, which you can [download here](#). When you run the installer, make sure the **SSMS Integration Pack** check box is selected:



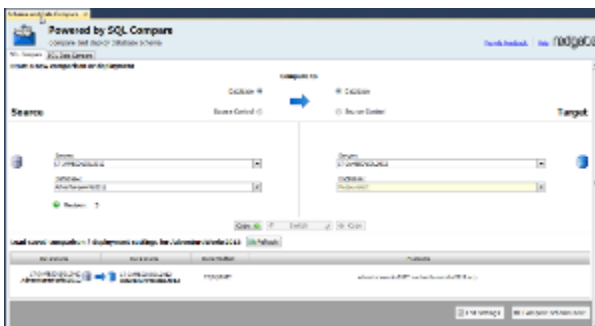
## Comparing databases

To compare two databases from Management Studio:

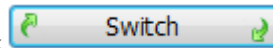
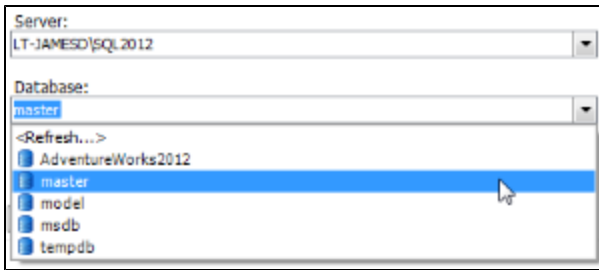
1. In the SQL Server Management Studio Object Explorer, right-click a database you want to compare, and click **Compare schema to**:



The Schema and Data Compare tab is displayed, with the database you selected set as the source in the leftmost pane:



2. In the rightmost pane, select the database you want to set as the target:



To switch the source and target and databases, click [Switch](#).  
For more information on selecting databases to compare in SQL Compare, see: [Setting data sources](#).

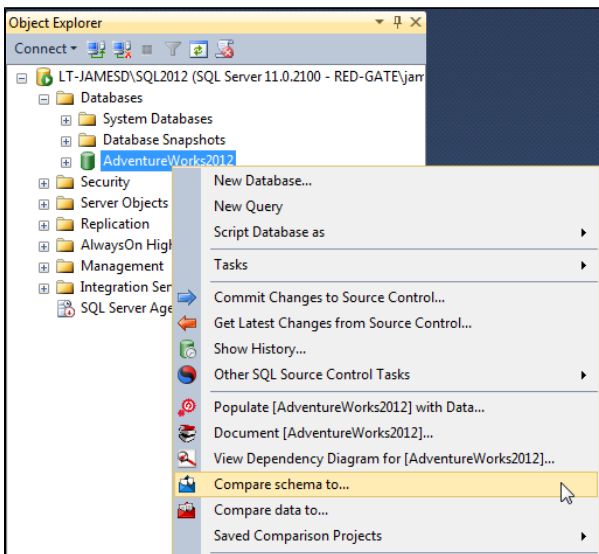
3. Click **Compare schema now**.  
SQL Compare launches, displaying the comparison results.

## Comparing a version from source control

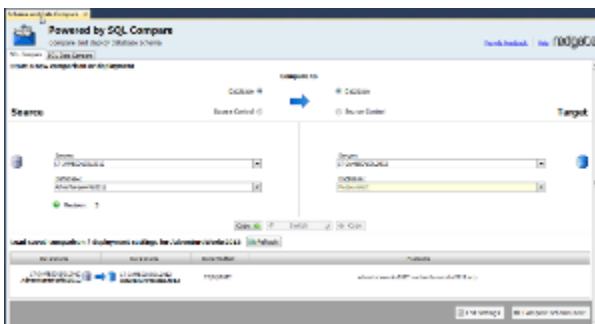
The SQL Server Management Studio add-in enables you to compare and deploy versions of a database linked to [SQL Source Control 1.1](#) or later.

To set a version from source control as a data source:

1. In SQL Server Management Studio Object Explorer, right-click a database you want to compare, and click **Compare schema to**:



The Schema and Data Compare tab is displayed, with the database you selected set as the source in the leftmost pane:



2. In the upper pane, under Compare To, select **Source Control**:

Source

Compare to

Database

Source Control

Repository:  
Please select

3. In the **Repository** box, select a database linked to SQL Source Control, or click **<Browse source control...>** to specify a repository URL.
4. In the **Version** box, select a specific revision from the source control history, or select the latest revision:

Repository:

AdventureWorks2012 (LT-JAMESD\SQL2012)

Version:

Latest (Head)

<Select a version from history...>

Latest (Head)

5. Click **Compare Now**.  
SQL Compare launches, displaying the comparison results.