

Installing SQL Clone



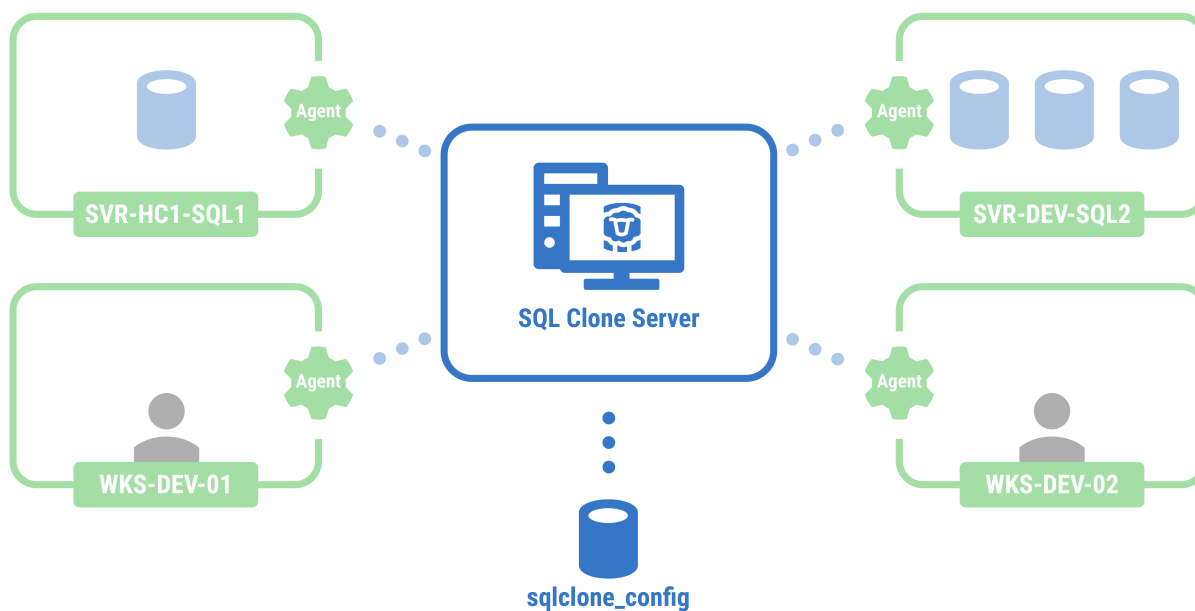
Uninstall old versions

There is no upgrade path from the "technical preview" (prior to 0.4), you should remove any clones and images, then uninstall it before proceeding with the beta installation.

Installing SQL Clone Server

You only need to install one copy of SQL Clone Server, however many servers you want to perform SQL Clone operations on. SQL Clone Server is a web app, so it must be installed on a machine that is visible from everywhere you want to use SQL Clone.

SQL Clone Sample Architecture



After running the installer, a setup utility runs to configure SQL Clone Server:

SQL Clone Server Setup

Configure SQL Clone Server

You've installed SQL Clone Server. Before you can start using SQL Clone, we need to finish setting it up.

- Please provide your name and email address. During the beta, we will use this information to help us improve SQL Clone by sending automatic usage and error reports. We may contact you for more information if you experience problems.

User details

Full name:

Email address:

SQL Clone Server

sqlclone_config

Cancel Next

SQL Clone Server Setup

Configure SQL Clone Server

- We need to **install a service** and **create a SQL Server database** to keep track of your data images and clones.
- The service creates and uses the database via **Windows authentication**. You may wish to create a service account with access to the database.

Configuration database

SQL Server name:

Windows domain/username:

Windows password:

Customize database name:

SQL Clone Server

sqlclone_config

Previous Finish

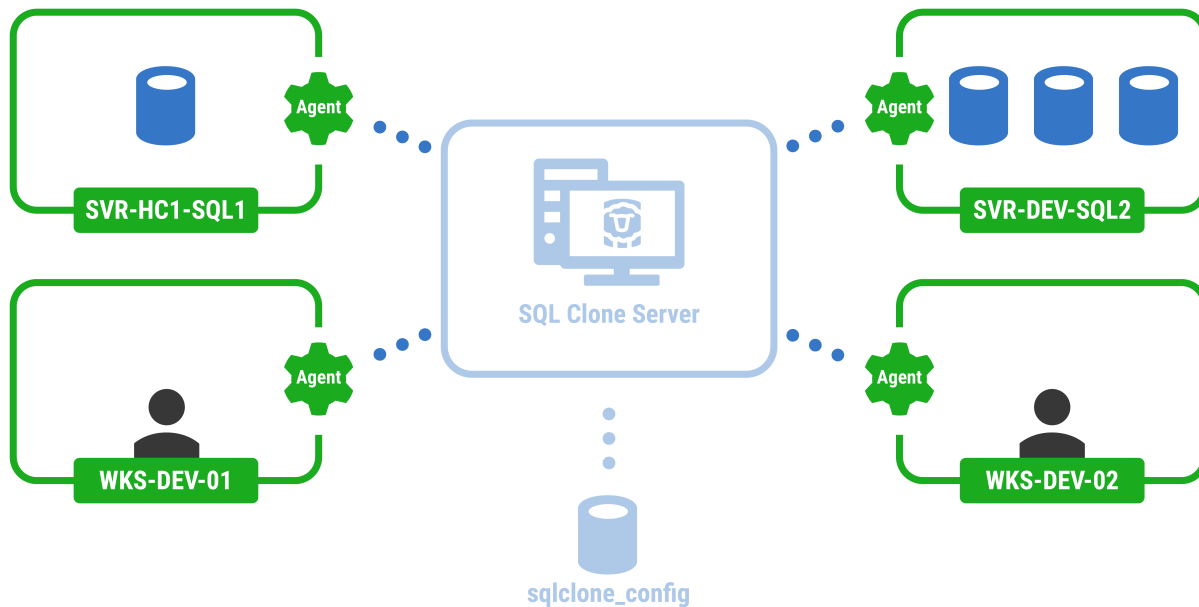
This will configure and start the server. The server's web app uses Windows authentication, so log in with your Windows credentials.

The URL will be of the form: <http://machine-name:14145>. On this machine there'll be a start menu shortcut, but you'll need to share the link with other users who want to access the web app from other devices.

Installing SQL Clone agents

Once you have installed SQL Clone Server, you will need to install one or more SQL Clone agents. The SQL Clone agent installed can be downloaded from the home page of the server's web app. You will need to install an agent on every machine with SQL Servers on which you want to perform SQL Clone operations.

SQL Clone Sample Architecture



The agent installer requires a username and password for the agent service. These credentials will also be used to connect to databases if you choose "windows authentication" within the tool.

The image shows a screenshot of the 'SQL Clone Agent Setup' window. The title bar reads 'SQL Clone Agent Setup'. The main heading is 'Configure SQL Clone Agent'. Below the heading, there are two bullet points:

- Each SQL Clone Agent **creates and maintain images and clones** on SQL Server instances on the same machine. We need to **install a service** to do this.
- The service needs to run as a user with **local admin privileges**. If you use **Windows Authentication**, this user will be used when creating images and clones. You may wish to create a service account to run the agent.

Below the bullet points, there are two sections:

Service credentials

Windows domain\username:

Windows password:

Advanced settings

☐ Customize clone location and server connection

On the right side of the window, there is a diagram showing the 'SQL Clone Server' (monitor icon) connected via dotted lines to an 'Agent' (gear icon), which is then connected to three database icons.

At the bottom of the window, there are two buttons: 'Cancel' and 'Finish'.

Most users won't need customize the advanced settings available:

- The server URL will be the same as used to access the web app but start with https and end in port 14146
- The server thumbprint should only be changed if advised by support
- Changing the clone location will break any existing clones

SQL Clone Agent Setup

Configure SQL Clone Agent

SQL Clone Server connection

The agent will connect to a SQL Clone server running in this location with the specified certificate thumbprint. You may need to change this if the agent is unable to connect.

Server URL:

https://DEV-GRAHAMH.red-gate.com:14146

Server thumbprint:

82E01A5F2FE5A4A489853AD241E850A875F5F95F

Clone file location

By default, clones are created in the agent user's local AppData folder. You can override this by entering a path below. **Changing this will break any existing clones.**

Override clone location:

Browse...

SQL Clone Server

Agent

Previous

Finish

See [Requirements](#) for more information about what permissions the agent user requires.